

**IMPORTANT SAFETY NOTICE**  
*YOUR IMMEDIATE ACTION IS REQUIRED*

**tyco** | **SCOTT**  
HEALTH & SAFETY

**Important Safety Notice Concerning:**

**North American NIOSH Approved Scott ELSA product - 5, 10, 15 & 5HF versions only**

**Date:** June 26, 2009

**To:** All Users of North American NIOSH Approved Scott ELSA product - 5, 10, 15 & 5HF versions only

**Warning**

Scott has received a few reports of ELSA emergency escape respirators losing pressure during storage. Investigation has found that these respirators may have developed air leaks either at the pressure gage or the fill port adapter. The result may be a loss of air resulting in lower than expected duration use of the respirator. The monthly equipment inspections, as recommended in the User Instructions, will help you identify any units with leaks. Failure to follow the user instructions and the instructions in this notice may result in exposure to the atmosphere to which the respirator was intended to protect against.

**Carefully Review this entire notice before taking action**

**Why you received this notice:**

Scott Health and Safety has received reports of ELSA emergency escape respirators developing air leakage resulting in reduced duration of the respirator. After investigation and repeated testing Scott has determined that air leaks may develop from the cylinder valve gauge and the Compressed Gas Association (CGA) #346 cylinder fill adapter. Air leakage may become apparent on all ELSA emergency escape respirators manufactured prior to February 2009.

Owners of these ELSA emergency escape respirators may identify the age of these products in their possession from the reducer serial number stamped into the reducer body. (see to Fig. 1, below)

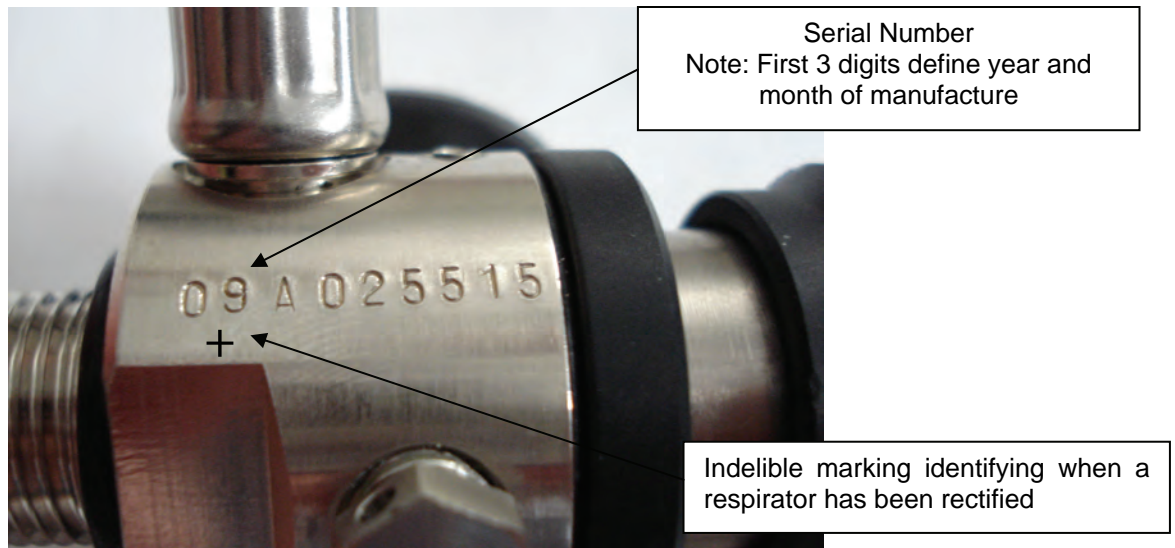


Fig. 1

The respirator serial number and date of manufacture may be determined as shown above. The first two digits of the serial number identify the year of manufacture. The third digit of the serial number represents the month of manufacture identified by the letters A-M. Note: the letter 'I' is not used to prevent confusion with the number 1.

All respirators manufactured prior to February 2009 that have been rectified to cure this leak are indelibly marked with a plus sign under the serial number as shown in Fig. 1.

The possible leak path behind the gauge is highlighted on Fig. 2. The potential leak path between the charging port adaptor and the reducer body is highlighted on Fig. 3.

If in doubt, verification of the leak-tightness of these joints can be confirmed using Sherlock<sup>®1</sup> leak detection fluid.

Scott has taken action to address both of these problems: From February 2008 the material of the O-ring behind the gauge has been changed from Nitrile to Viton<sup>®2</sup> to improve the sealing of the joint. From February 2009 additional thread adhesive has been applied to the threaded joint between the reducer body and the charging port adaptor to ensure continued tightness of the adaptor after charging.

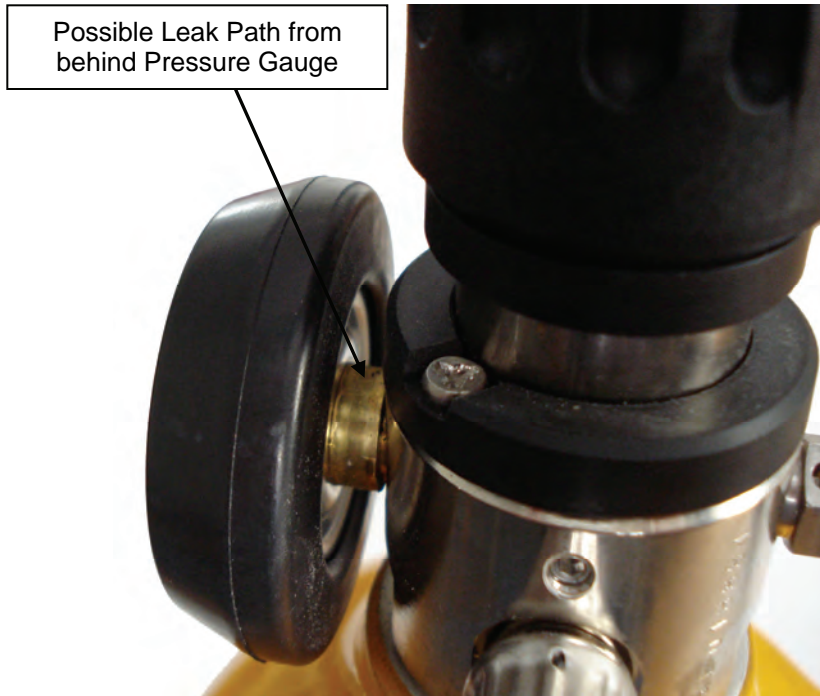


Fig. 2

<sup>1</sup>Sherlock is a registered trademark of Winton Products Company, Inc., Charlotte, NC.

<sup>2</sup>Viton is a registered trademark of E.I. du Pont de Nemours and Company, Wilmington, DE.

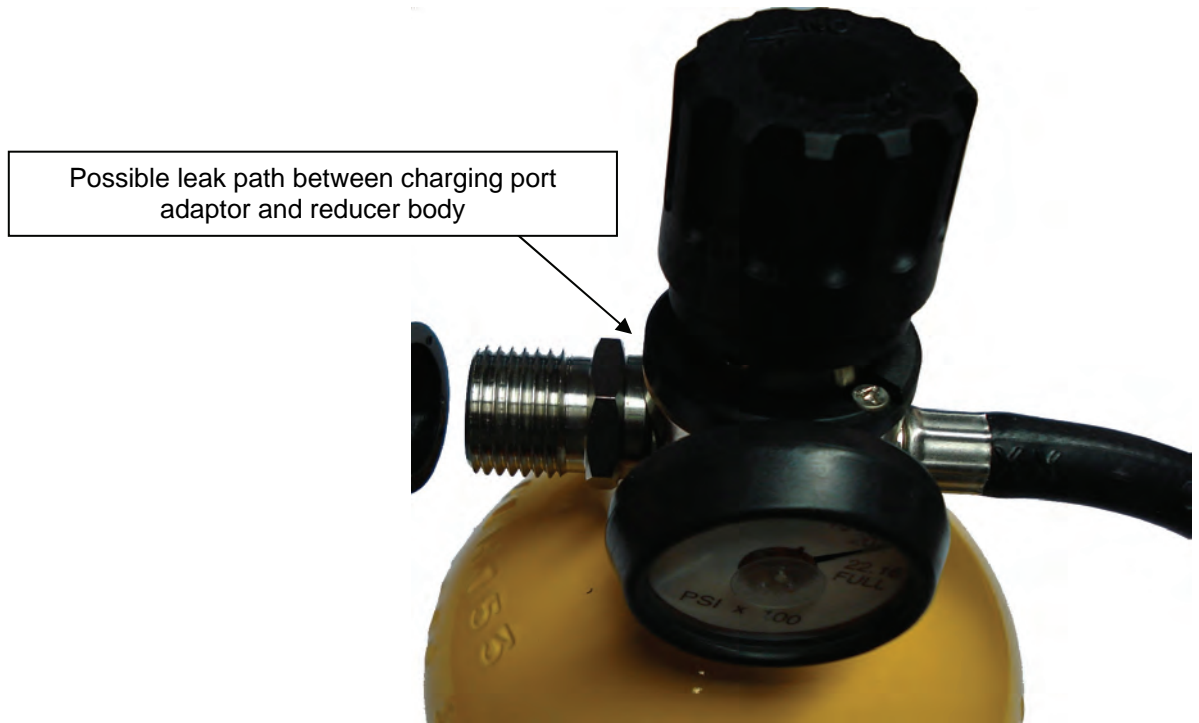


Fig. 3

**What actions you should take:**

Owners of Scott ELSA emergency escape respirators are urged to carry out inspection activities at least every thirty (30) days as described in the Operating and Maintenance Manual originally provided with the respirator. Particular attention must be given with regard to the following:

- Regular Operational Inspection Step 9, below:  
“Ensure cylinder is fully charged. At room temperature the tip of the gauge pointer must be touching any part of the full band. See Fig. 4. If the cylinder is not full remove from service and tag for refilling by authorized personnel. See Cylinder Charging Procedure section of this instruction.”

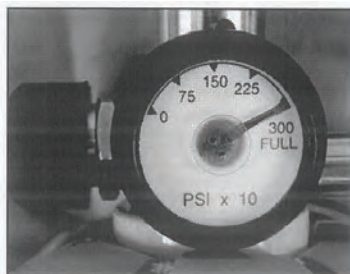


Fig. 4

During this routine inspection, take note of the date of manufacture and determine if there is any drop in cylinder pressure during storage of the respirator. If a pressure drop is noted, remove the respirator from service and return it to your local Scott Authorized Service Center for appropriate corrective actions.

Your Scott Authorized Service Center will replace the cylinder valve gauge O-ring to prevent risk of leakage from behind the gauge. The service center will also replace the bonded seal and add thread adhesive to the CGA connector to prevent leakage from this connector.

Upon completion of this service your ELSA respirator will be marked with a plus sign below the serial number (see Fig. 1) to show that this upgrade has been completed.

If you require assistance in arranging for a Scott Authorized Service Center to perform these repairs, please contact your Scott Regional Manager, Field Service Specialist or Technical Support Team member at 1-800-247-7257.



**Copyright © 2009, SCOTT, All Rights Reserved**